

Using Single Supply Operational Amplifiers in Embedded Systems

Author: *Bonnie Baker*
Microchip Technology Inc.

INTRODUCTION

Beyond the primitive transistor, the operational amplifier (op amp) is the most basic building block for analog applications. Fundamental functions such as gain, load isolation, signal inversion, level shifting, adding and/or subtracting signals are easily implemented with an op amp. More complex circuits can also be implemented, such as the instrumentation amplifier, a current-to-voltage converter, and filters, to name only a few. Regardless of the level of complexity of the op amp circuit, knowing the fundamental operation and behavior of an op amp will save a considerable amount of up-front design time.

Formal classes on this subject can be very comprehensive and useful. However, many times they fall short in terms of experience or common sense. For instance, a common mistake that is made when designing with op amps is neglecting to include bypass capacitors in the circuit. Op amp theory often overlooks this practical detail. If the bypass capacitor is missing, the amplifier circuit can oscillate at a frequency that “theoretically” doesn’t make sense. If textbook solutions are used, this can be a difficult problem to solve.

This application note is divided into three sections. The first section lists fundamental amplifier applications, including design equations. These amplifier circuits were selected with embedded system integration in mind.

The second section uses these fundamental circuits to build useful amplifier functions in embedded control applications.

The third section identifies the most common single-supply op amp circuit design mistakes. This list of mistakes has been gathered over many years of troubleshooting circuits with numerous designers in the industry. The most common design pitfalls can easily be avoided if the suggestions in this application note are used.

FUNDAMENTAL OP AMP CIRCUITS

The op amp is the analog building block that is analogous to the digital gate. By using the op amp in the design, circuits can be configured to modify the signal in the same fundamental way that the inverter and the AND and OR gates do in digital circuits. In this section, fundamental building blocks such as the voltage follower, non-inverting gain and inverting gain circuits are discussed, followed by a rail splitter, difference amplifier, summing amplifier and the current-to-voltage converter.

Voltage Follower Amplifier

Starting with the most basic op amp circuit, the buffer amplifier (shown in [Figure 1](#)) is used to drive heavy loads, solve impedance matching problems, or isolate high power circuits from sensitive, precise circuitry.

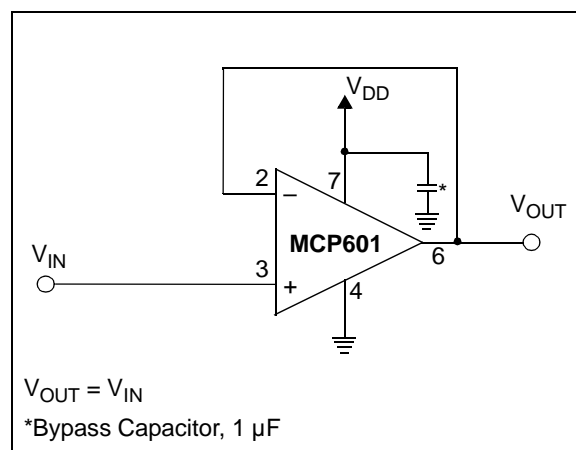


FIGURE 1: Buffer amplifier; also called a voltage follower.

The buffer amplifier shown in [Figure 1](#) can be implemented with any single-supply, unity-gain, stable amplifier. In this circuit, as with all amplifier circuits, the op amp must be bypassed with a capacitor. For single-supply amplifiers that operate in bandwidths from DC to megahertz, a 1 μF capacitor is usually appropriate. Sometimes a smaller bypass capacitor is required, for amplifiers that have bandwidths up to the 10s of megahertz. In these cases, a 0.1 μF capacitor would be appropriate. If the op amp does not have a bypass capacitor or the wrong value is selected, it may oscillate.

The analog gain of the circuit in [Figure 1](#) is +1 V/V. Notice that this circuit has a positive overall gain, but the feedback loop is tied from the output of the amplifier to the inverting input. An all too common error is to assume that an op amp circuit that has a positive gain requires positive feedback. If positive feedback is used, the amplifier will most likely drive to either rail at the output.

This amplifier circuit will give good linear performance across the bandwidth of the amplifier. The only restrictions on the signal will occur as a result of a violation of the input common-mode and output swing limits. These limitations are discussed in the third section of this application note, [Amplifier Design Pitfalls](#).

If this circuit is used to drive heavy loads, the amplifier that is actually selected must be specified to provide the required output currents. Another application where this circuit may be used is to drive capacitive loads. Not every amplifier is capable of driving capacitors without becoming unstable. If an amplifier can drive capacitive loads, the product data sheet will highlight this feature. However, if an amplifier cannot drive capacitive loads, the product data sheets will not explicitly say.

Another use for the buffer amplifier is to solve impedance matching problems. This would be applicable in a circuit where the analog signal source has a relatively high impedance, as compared to the impedance of the following circuitry. If this occurs, there will be a voltage loss with the signal, as a consequence of the voltage divider between the source's impedance and the following circuitry's impedance. The buffer amplifier is a perfect solution to the problem. The input impedance of the non-inverting input of an amplifier can be as high as $10^{13}\Omega$ for CMOS amplifiers. In addition, the output impedance of this amplifier configuration is usually less than 10Ω .

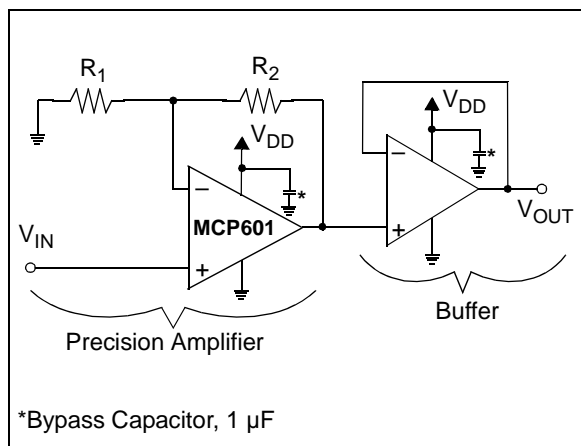


FIGURE 2: Load isolation is achieved by using a buffer amplifier.

Yet another use of this configuration is to separate a heat source from the sensitive precision circuitry, as shown in [Figure 2](#). Imagine that the input circuitry to this buffer amplifier is amplifying a $100\ \mu\text{V}$ signal.

This type of amplification is difficult to do with any level of accuracy in the best of situations. This precision measurement can easily be disrupted by changing the output current drive of the device that is doing the amplification work. An increase in current drive will cause self heating of the chip, which induces an offset change. An analog buffer can be used to perform the function of driving heavy loads, while the front-end circuitry can be used to make precision measurements.

Gaining Analog Signals

The buffer solves a lot of analog signal problems; however, there are instances in circuits where a signal needs to be gained. Two fundamental types of amplifier circuits can be used. With the first type, the signal is not inverted, as shown in [Figure 3](#). This type of circuit is useful in single-supply⁽¹⁾ amplifier applications, where negative voltages are usually not possible.

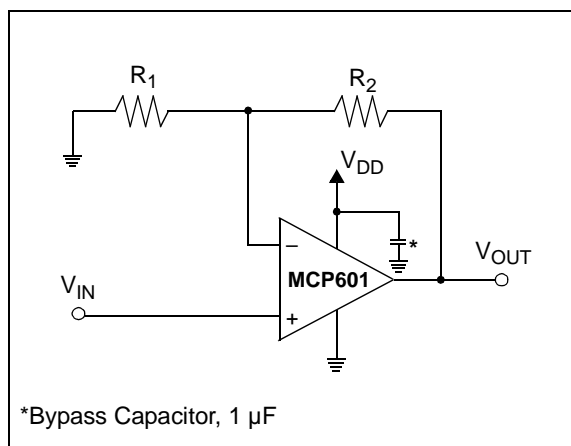


FIGURE 3: Op amp configured in a non-inverting gain circuit.

The input signal to this circuit is presented to the high-impedance, non-inverting input of the op amp. The gain applied by the amplifier circuit to the signal is equal to:

EQUATION 1:

$$V_{OUT} = \left(1 + \frac{R_2}{R_1}\right) V_{IN}$$

Typical values for these resistors in single supply circuits are above $2\ \text{k}\Omega$ for R_2 . The resistor (R_1) restrictions are dependent on the amount of gain desired versus the amount of amplifier noise and input offset voltage, as specified in the product data sheet of the op amp.

1. For this discussion, single supply implies that the negative supply pin of the operational amplifier is tied to ground and the positive supply pin is tied to +5V. All discussion in this application note can be extrapolated to other supply voltages where the single supply exceeds 5V or dual supplies are used.

Once again, this circuit has some restrictions in terms of the input and output range. The non-inverting input is restricted by the common-mode range of the amplifier. The output swing of the amplifier is also restricted, as stated in the product data sheet of the individual amplifier. Most typically, the larger signal at the output of the amplifier causes more signal clipping errors than the smaller signal at the input. If undesirable clipping occurs at the output of the amplifier, the gain should be reduced.

An inverting amplifier configuration is shown in Figure 4. With this circuit, the signal at the input resistor (R_1) is gained and inverted to the output of the amplifier. The gain equation for this circuit is:

EQUATION 2:

$$V_{OUT} = -\left(\frac{R_2}{R_1}\right) V_{IN} + \left(1 + \frac{R_2}{R_1}\right) V_{BIAS}$$

The ranges for R_1 and R_2 are the same as in the non-inverting circuit shown in Figure 3.

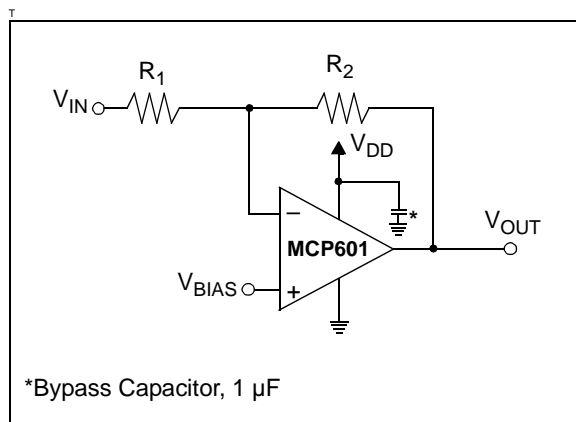


FIGURE 4: Op amp configured in an inverting gain circuit. In single supply environments, a V_{BIAS} is required to insure the output stays above ground.

In single supply applications, this circuit can easily be misused. For example, let R_2 equal 10 k Ω , R_1 equal 1 k Ω , V_{BIAS} equal 0V, and the voltage at the input resistor R_1 equal to 100 mV. With this configuration, the output voltage would be -1V. This would violate the output swing range of the op amp. In reality, the output of the amplifier would go as near to the ground as possible.

The inclusion of a DC voltage at V_{BIAS} in this circuit solves this problem. In the previous example, a voltage of 225 mV applied to V_{BIAS} would level shift the output signal up 2.475V. This would make the output signal equal to (2.475V - 1V) or 1.475V at the output of the amplifier. Typically, the average output voltage should be designed to be equal to $V_{DD}/2$.

Single Supply Circuits and Supply Splitters

As was shown in the inverting gain circuit (Figure 4), single supply circuits often need a level shift to keep the signal between negative (usually ground) and positive supply pins. This level shift can be designed with a single amplifier and a combination of resistors and capacitors, as shown in Figure 5. Many times a simple buffer amplifier without compensation capacitors will accomplish this task. In other cases the level shift circuit will see dynamic or transient load changes, like the reference to an Analog-to-Digital (A/D) converter. In these applications, the level shift circuit must hold its voltage constant. If it does change, a conversion error might be observed.

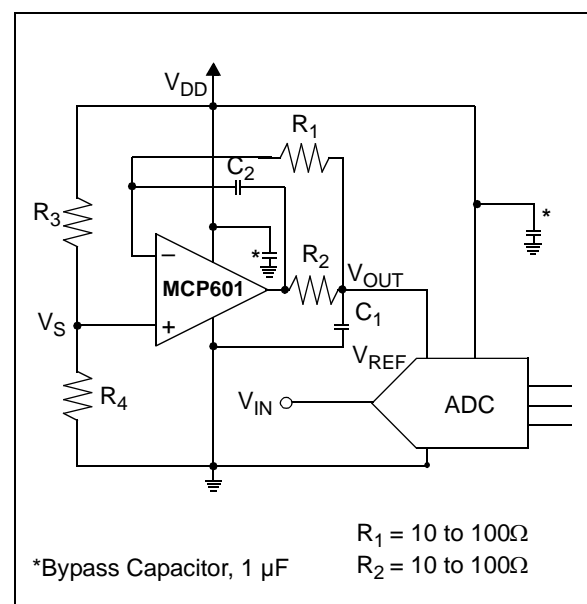


FIGURE 5: A supply splitter is constructed using one op amp. This type of function is particularly useful in single supply circuits.

A solid level shift voltage can easily be implemented using a voltage divider (R_3 and R_4), or a reference voltage source buffered by the amplifier. The transfer function for this circuit is:

EQUATION 3:

$$V_{OUT} = V_{DD} \left(\frac{R_4}{R_3 + R_4} \right)$$

The circuit in Figure 5 has an elaborate compensation scheme, to allow for the heavy capacitive load C_1 . The benefit of this big capacitor is that it presents a very low AC resistance to the reference pin of the A/D converter. In the AC domain, the capacitor serves as a charge reservoir that absorbs any momentary current surges which are characteristic of sampling A/D converter reference pins.

The Difference Amplifier

The difference amplifier combines the non-inverting amplifier and inverting amplifier circuits of Figure 3 and Figure 4 into a signal block that subtracts two signals. The implementation of this circuit is shown in Figure 6.

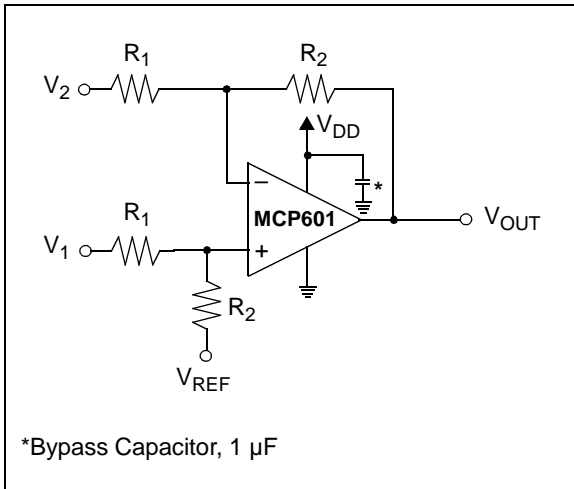


FIGURE 6: Op amp configured in a difference amplifier circuit.

The transfer function for this amplifier circuit is:

EQUATION 4:

$$V_{OUT} = (V_1 - V_2) \left(\frac{R_2}{R_1} \right) + V_{REF}$$

This circuit configuration will reliably take the difference of two signals as long as the signal source impedances are low. If the signal source impedances are high with respect to R_1 , there will be a signal loss due to the voltage divider action between the source and the input resistors to the difference amplifier. Additionally, errors can occur if the two signal source impedances are mismatched. With this circuit, it is possible to have gains equal to, or higher than one.

Summing Amplifier

Summing amplifiers are used when multiple signals need to be combined by addition or subtraction. Since the difference amplifier can only process two signals, it is a subset of the summing amplifier.

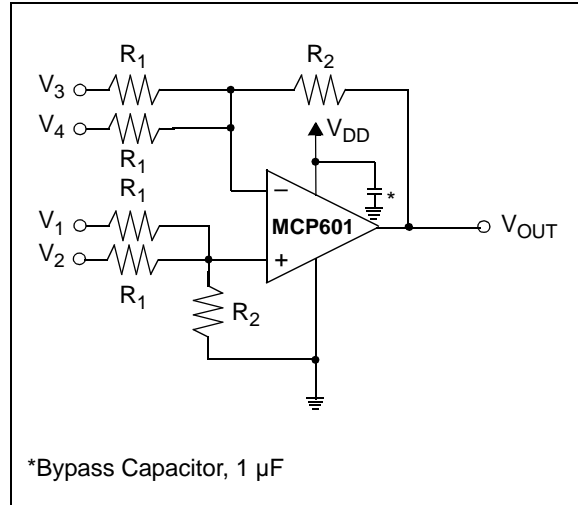


FIGURE 7: Op amp configured in a summing amplifier circuit.

The transfer function of this circuit is:

EQUATION 5:

$$V_{OUT} = (V_1 + V_2 - V_3 - V_4) \left(\frac{R_2}{R_1} \right)$$

Any number of inputs can be used on either the inverting or non-inverting input sides, as long as there are an equal number of both with equivalent resistors.

Current-to-Voltage Conversion

An op amp can be used to easily convert the signal from a sensor that produces an output current, such as a photodetector, into a voltage. This is implemented with a single resistor and an optional capacitor in the feedback loop of the amplifier, as shown in [Figure 8](#).

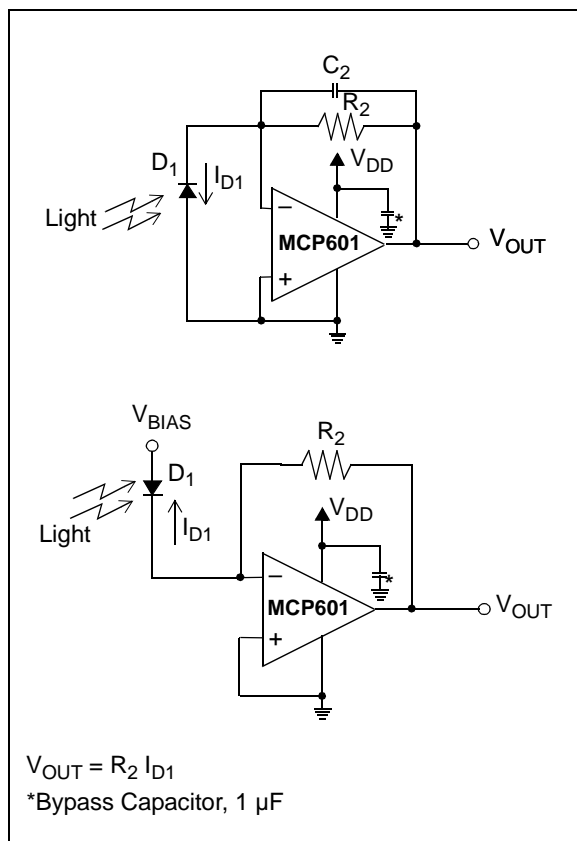


FIGURE 8: Current-to-voltage converter using an amplifier and one resistor. The top light-scanning circuit is appropriate for precision applications. The bottom circuit is appropriate for high-speed applications.

As light impinges on the photo diode, charge is generated, causing a current to flow in the reverse bias direction of the photodetector. If a CMOS op amp is used, the high input impedance of the op amp causes the current from the detector (I_{D1}) to go through the path of lower resistance R_2 . Additionally, the op amp input bias current error is low because it is CMOS (typically < 200 pA). The non-inverting input of the op amp is referenced to ground, which keeps the entire circuit biased to ground. These circuits will only work if the common mode range of the amplifier includes zero.

Two circuits are shown in [Figure 8](#). The top circuit is designed to provide precision sensing from the photodetector. In this circuit the voltage across the detector is nearly zero and equal to the offset voltage of the amplifier. With this configuration, current that appears across the resistor R_2 is primarily a result of the light excitation on the photodetector.

The photosensing circuit on the bottom of [Figure 8](#) is designed for higher speed sensing. This is done by reverse biasing the photodetector, which reduces the parasitic capacitance of the diode. There is more leakage through the diode, which causes a higher DC error.

USING THE FUNDAMENTALS

Instrumentation Amplifier

Instrumentation amplifiers are found in a large variety of applications, from medical instrumentation to process control. The instrumentation amplifier is similar to the difference amplifier in that it subtracts one analog signal from another, but it differs in terms of the quality of the input stage. A classic, three op amp instrumentation amplifier is illustrated in [Figure 9](#).

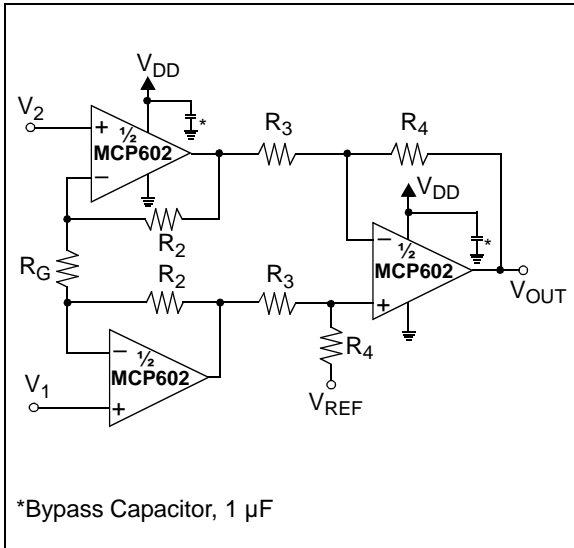


FIGURE 9: An instrumentation amplifier can be designed using three amplifiers. The input op amps provide signal gain. The output op amp converts the signal from two inputs to a single-ended output with a difference amplifier.

With this circuit, the two input signals are presented to the high-impedance non-inverting inputs of the amplifiers. This is a distinct advantage over the difference amplifier configuration, when source impedances are high or mismatched. The first stage also gains the two incoming signals. This gain is simply adjusted with one resistor, R_G .

Following the first stage of this circuit is a difference amplifier. The function of this portion of the circuit is to reject the common mode voltage of the two input signals, as well as to differentiate them. The source impedances of the signals into the input of the difference amplifier are low, equivalent and well controlled.

The reference voltage of the difference stage of this instrumentation amplifier is capable of spanning a wide range. Most typically this node is referenced to half of the supply voltage in a signal supply application. A supply splitter, such as the circuit in [Figure 5](#), can be used for this purpose. The transfer function of this circuit is:

EQUATION 6:

$$V_{OUT} = (V_1 - V_2) \left(1 + \frac{2R_2}{R_G} \right) \left(\frac{R_4}{R_3} \right) + V_{REF}$$

A second instrumentation amplifier is shown in [Figure 10](#). In this circuit, the two amplifiers serve the functions of load isolation, and signal gain. The second amplifier also differentiates the two signals.

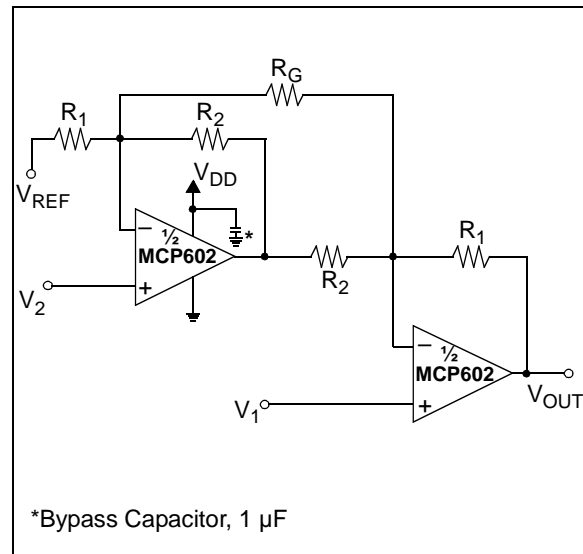


FIGURE 10: An instrumentation amplifier can be designed using two amplifiers. This configuration is best suited for higher gains (gain > 3 V/V).

The circuit reference voltage is supplied to the first op amp in the signal chain. Typically, this voltage is half of the supply voltage in a single supply environment. The transfer function of this circuit is:

EQUATION 7:

$$V_{OUT} = (V_1 - V_2) \left(1 + \frac{R_1}{R_2} + \frac{2R_1}{R_G} \right) + V_{REF}$$

Floating Current Source

A floating current source can come in handy when driving a variable resistance, like a Resistive Temperature Device (RTD). This particular configuration produces an appropriate 1 mA source for an RTD-type sensor; however, it can be tuned to any current.

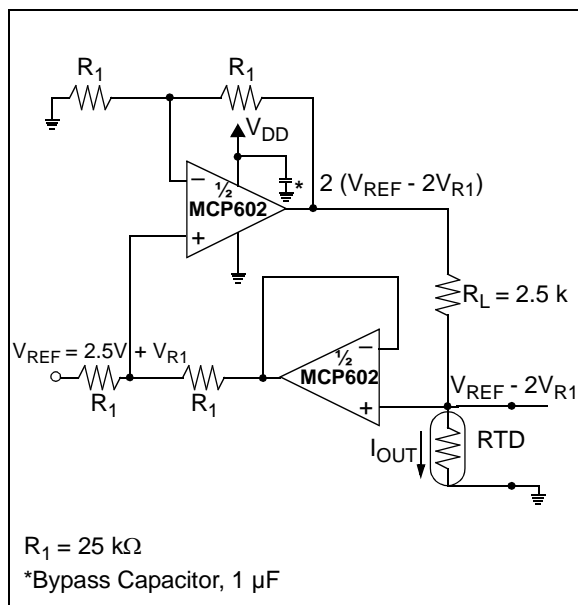


FIGURE 11: A floating current source can be constructed using two op amps and a precision voltage reference.

With this configuration, the voltage of V_{REF} is reduced via the first resistor (R_1) by the voltage V_{R1} . The voltage applied to the non-inverting input of the top op amp is $V_{REF} - V_{R1}$. This voltage is gained to the amplifier's output by two to equal $2(V_{REF} - V_{R1})$. Meanwhile, the output for the bottom op amp is presented with the voltage $V_{REF} - 2V_{R1}$. Subtracting the voltage at the output of the top amplifier from the non-inverting input of the bottom amplifier gives:

$$2(V_{REF} - V_{R1}) - (V_{REF} - 2V_{R1}), \text{ which equals } V_{REF}.$$

The transfer function of the circuit is:

EQUATION 8:

$$I_{OUT} = \frac{V_{REF}}{R_L}$$

Filters

Band-pass and low-pass filters are very useful in eliminating unwanted signals prior to the input of an A/D converter. The low-pass filter shown in Figure 12 has two poles that can be configured for a Butterworth filter response. Butterworth filters have a flat magnitude response in the pass-band with good all-around performance.

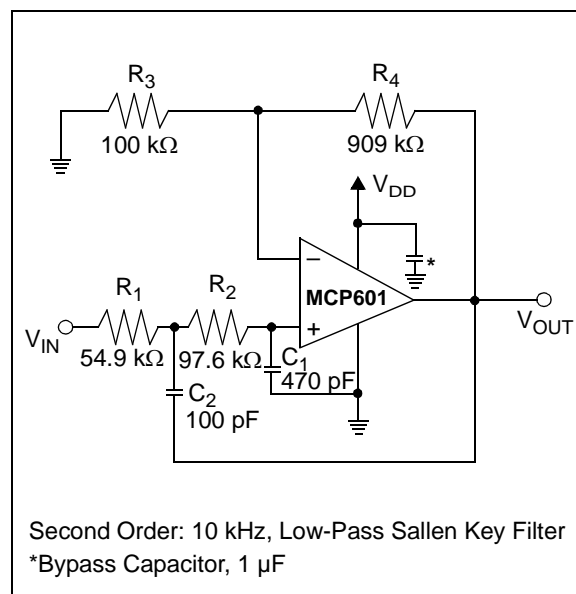


FIGURE 12: Low-pass, two-pole, active filters are easily designed with one op amp. The resistors and capacitors can be adjusted to implement other filter types, such as Bessel and Chebyshev.

On the down side, there is some overshoot and ringing with a step response through this filter. This may or may not be an issue, depending on the application circuit requirements. The gain of this filter is adjustable with R_3 and R_4 .

Notice the similarities in this gain equation and the non-inverting amplifier shown in Figure 3.

This type of filter is also referred to as an anti-aliasing filter, which is used to eliminate circuit noise in the frequency band above half of Nyquist of the sampling system. In this manner, these high-frequency noises, that would typically alias back into the signal path, are removed.

The DC gain of the circuit in Figure 12 is:

EQUATION 9:

$$\frac{V_{OUT}}{V_{IN}} = \left(1 + \frac{R_4}{R_3} \right)$$

AN682

The band-pass filter shown in Figure 13 is configured with a zero and two poles, to accommodate speech applications. The single zero high-pass filter portion of this circuit is constructed with C_1 and R_1 in parallel with R_2 . Notice that R_1 and R_2 also create a supply splitter voltage at the non-inverting inputs of both of the amplifiers. This insures that both op amps operate in their linear region. The second amplifier, U_2 , in conjunction with the components R_3 , R_4 , C_3 and C_4 set a two pole corner frequency.

This filter eliminates high-frequency noise that may be aliased back into the signal path. The signal gain of this circuit is:

EQUATION 10:

$$V_{OUT} = V_{IN} \left(\frac{R_3}{R_4} \right) \left(\frac{R_2}{R_1 + R_2} \right)$$

For more information about low-pass filters, refer to AN699 – “Anti-Aliasing Analog Filters for Data Acquisitions Systems”.

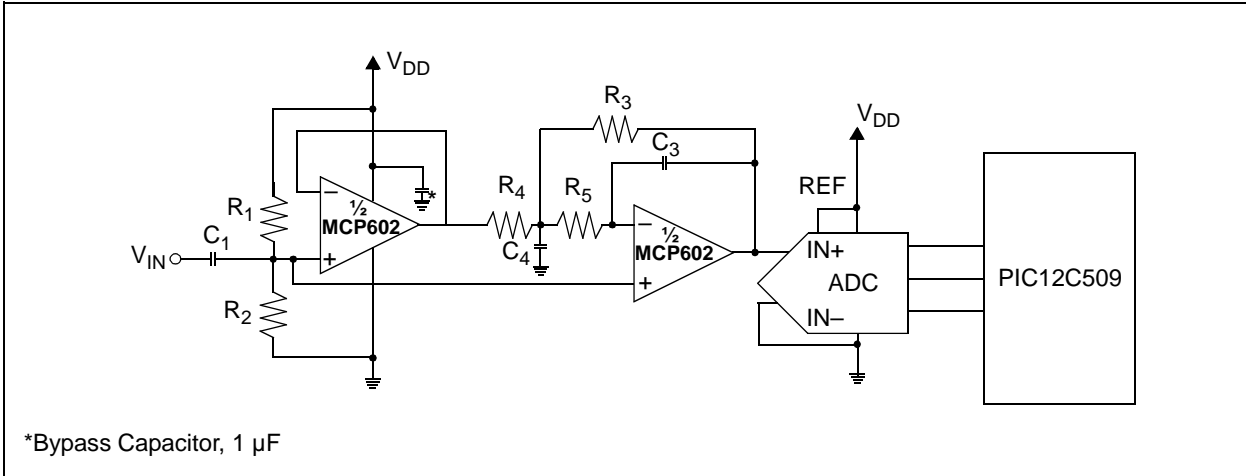


FIGURE 13: Band-pass filters can be implemented with one op amp designed to perform the high-pass function, and a second amplifier to perform the low-pass function.

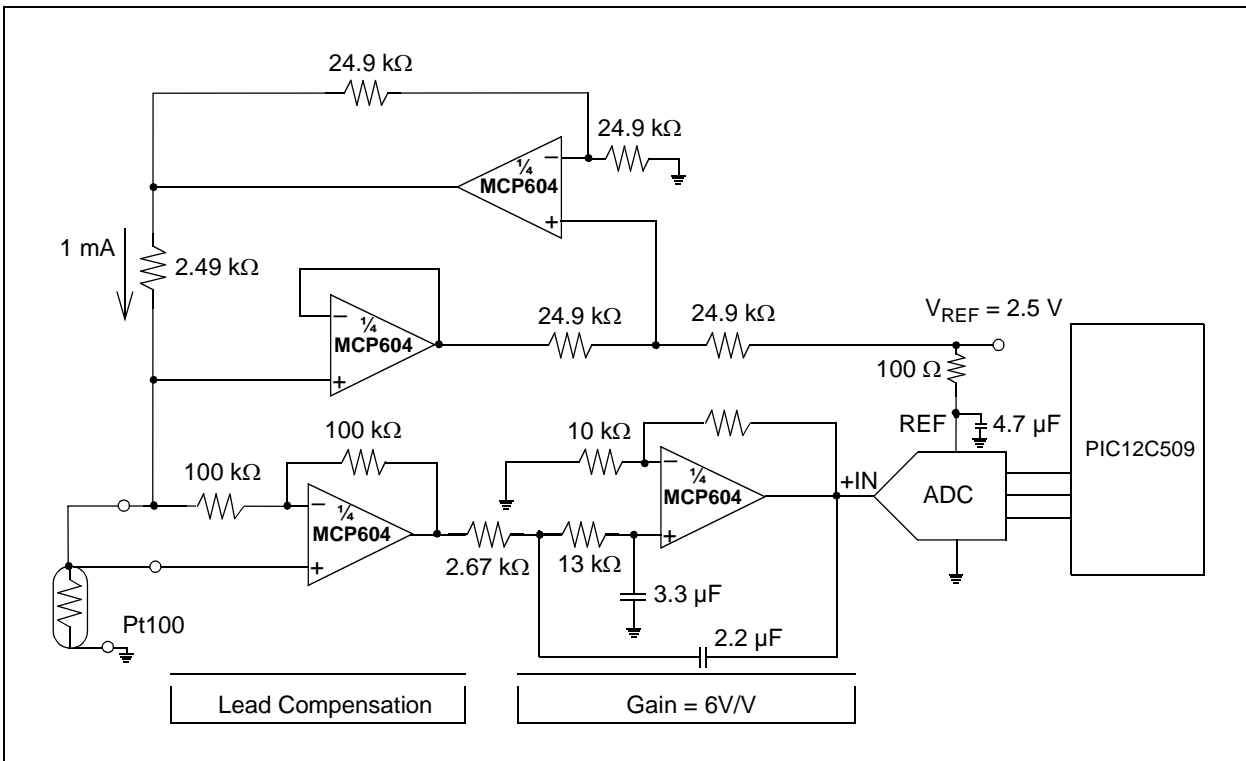


FIGURE 14: Complete single supply temperature measurement circuit.

Putting it Together

The circuit shown in [Figure 14](#) utilizes four operational amplifiers along with a 12-bit A/D converter, to implement a complete single-supply temperature measurement circuit. The temperature sensor is an RTD that requires current excitation. The current excitation is supplied by the circuit described in [Figure 11](#). The gain and anti-aliasing filter is implemented with the circuit shown in [Figure 13](#).

The voltage signal from the RTD is sensed by an amplifier, used in a combination of non-inverting and inverting configurations.

The output of this amplifier is then sent to an amplifier configured as a two-pole, low-pass filter in a gain of +6 V/V. A gain of six was chosen in order to comply with the input range of the A/D converter. Assuming the sampling frequency of the A/D converter is 75 kHz, which is also known as the Nyquist frequency, the cut-off frequency of the anti-aliasing filter (U4) is set to 10 kHz. This allows plenty of bandwidth for the filter to attenuate the signal prior to half of Nyquist. The A/D converter is a 12-bit Successive Approximation Register (SAR) converter that is interfaced to the PIC12C509 microcontroller.

AMPLIFIER DESIGN PITFALLS

This section lists the common problems associated with using an op amp with a power supply and an input signal on a PC Board. It is divided into four categories:

- General Suggestions
- Input Stage Problems
- Bandwidth Issues
- Single Supply Rail-to-Rail

Hopefully, the most common problems with op amp implementation have been addressed within this application note.

General Suggestions

1. Be careful of the supply pins. Don't make them too high per the amplifier specification sheet, and don't make them too low. High supplies will damage the part. In contrast, low supplies will not bias the internal transistors and the amplifier won't work or it may not operate properly.
2. Make sure the negative supply (usually ground) is actually tied to a low-impedance potential. Additionally, make sure the positive supply is the voltage you expect when it is referenced to the negative supply pin of the op amp. Placing a voltmeter across the negative and positive supply pins verifies that you have the right relationship between the pins.
3. Ground cannot be trusted, especially in digital circuits. Plan your grounding scheme carefully. If the circuit has a lot of digital circuitry, consider separate ground and power planes. It is very difficult, if not impossible, to remove digital switching noise from an analog signal.
4. Decouple the amplifier power supplies with bypass capacitors as close to the amplifier as possible. For CMOS amplifiers, a 0.1 μF capacitor is usually recommended. Also decouple the power supply with a 10 μF capacitor.
5. Use short lead lengths to the inputs of the amplifier. If you have a tendency to use the white perf boards for prototyping, be aware that they can cause noise and oscillation. There is a good chance that these problems won't be a problem with the PCB implementation of the circuit.
6. Amplifiers are static sensitive! If they are damaged, they may fail immediately or exhibit a soft error (like offset voltage or input bias current changes) that will get worse over time.

Input Stage Problems

1. Know what input range is required from your amplifier. If either inputs of the amplifier go beyond the specified input range, the output will typically be driven to one of the power supply rails.
2. If you have a high gain circuit, be aware of the offset voltage of the amplifier. That offset is gained with the rest of your signal, and it might dominate the results at the output of the amplifier.
3. Do not use rail-to-rail input stage amplifiers, unless it is necessary. By the way, they are only needed when a buffer amplifier circuit is used or possibly an instrumentation amplifier configuration. Any circuit with gain will drive the output of the amplifier into the rail before the input has a problem.

Bandwidth Issues

1. Account for the bandwidth of the amplifier when sending signals through the circuit. You may have designed an amplifier for a gain of 10 and find that the AC output signal is much lower than expected. If this is the case, you may have to look for an amplifier with a wider bandwidth.
2. Instability problems can usually be solved by adding a capacitor in parallel with the feedback resistor around the amplifier. This does mean typically and not always. If an amplifier circuit is unstable, a quick stability analysis will show the problem and, probably, the solution.

Single Supply Rail-to-Rail

1. Op amp output drivers are capable of driving a limited amount of current to the load.
2. Capacitive loading an amplifier is risky business. Make sure the amplifier is specified to handle any loads that you may have.
3. It is very rare that a single-supply amplifier will truly swing rail-to-rail. In reality, the output of most of these amplifiers can only come within 50 to 200 mV from each rail. Check the product data sheets of your amplifier.

REFERENCES

- Sergio Franco – “*Design with Operational Amplifiers and Analog Integrated Circuits*”, McGraw Hill, 2001
- Thomas Frederiksen – “*Intuitive Operational Amplifiers: From Electron to Op Amp*”, McGraw Hill, 1988
- Williams, Jim – “*Analog Circuit Design*”, Butterworth-Heinemann, 1991
- Bonnie Baker – “*AN699 – Anti-aliasing Analog Filters for Data Acquisition Systems*”, Microchip Technology Inc., DS00699, 1999
- Bonnie Baker – “*AN722 – Operational Amplifier Topologies and DC Specifications*”, Microchip Technology Inc., DS00722, 1999
- Bonnie Baker – “*AN723 – Operational Amplifier AC Specifications and Applications*”, Microchip Technology Inc., DS00723, 2000

Note the following details of the code protection feature on Microchip devices:

- Microchip products meet the specification contained in their particular Microchip Data Sheet.
- Microchip believes that its family of products is one of the most secure families of its kind on the market today, when used in the intended manner and under normal conditions.
- There are dishonest and possibly illegal methods used to breach the code protection feature. All of these methods, to our knowledge, require using the Microchip products in a manner outside the operating specifications contained in Microchip's Data Sheets. Most likely, the person doing so is engaged in theft of intellectual property.
- Microchip is willing to work with the customer who is concerned about the integrity of their code.
- Neither Microchip nor any other semiconductor manufacturer can guarantee the security of their code. Code protection does not mean that we are guaranteeing the product as “unbreakable.”

Code protection is constantly evolving. We at Microchip are committed to continuously improving the code protection features of our products. Attempts to break Microchip's code protection feature may be a violation of the Digital Millennium Copyright Act. If such acts allow unauthorized access to your software or other copyrighted work, you may have a right to sue for relief under that Act.

Information contained in this publication regarding device applications and the like is provided only for your convenience and may be superseded by updates. It is your responsibility to ensure that your application meets with your specifications. MICROCHIP MAKES NO REPRESENTATIONS OR WARRANTIES OF ANY KIND WHETHER EXPRESS OR IMPLIED, WRITTEN OR ORAL, STATUTORY OR OTHERWISE, RELATED TO THE INFORMATION, INCLUDING BUT NOT LIMITED TO ITS CONDITION, QUALITY, PERFORMANCE, MERCHANTABILITY OR FITNESS FOR PURPOSE. Microchip disclaims all liability arising from this information and its use. Use of Microchip devices in life support and/or safety applications is entirely at the buyer's risk, and the buyer agrees to defend, indemnify and hold harmless Microchip from any and all damages, claims, suits, or expenses resulting from such use. No licenses are conveyed, implicitly or otherwise, under any Microchip intellectual property rights.

Trademarks

The Microchip name and logo, the Microchip logo, dsPIC, KEELOQ, KEELOQ logo, MPLAB, PIC, PICmicro, PICSTART, PIC³² logo, rfPIC and UNI/O are registered trademarks of Microchip Technology Incorporated in the U.S.A. and other countries.

FilterLab, Hampshire, HI-TECH C, Linear Active Thermistor, MXDEV, MXLAB, SEEVAL and The Embedded Control Solutions Company are registered trademarks of Microchip Technology Incorporated in the U.S.A.

Analog-for-the-Digital Age, Application Maestro, chipKIT, chipKIT logo, CodeGuard, dsPICDEM, dsPICDEM.net, dsPICworks, dsSPEAK, ECAN, ECONOMONITOR, FanSense, HI-TIDE, In-Circuit Serial Programming, ICSP, Mindi, MiWi, MPASM, MPLAB Certified logo, MPLIB, MPLINK, mTouch, Omniscient Code Generation, PICC, PICC-18, PICDEM, PICDEM.net, PICKit, PICtail, REAL ICE, rfLAB, Select Mode, Total Endurance, TSHARC, UniWinDriver, WiperLock and ZENA are trademarks of Microchip Technology Incorporated in the U.S.A. and other countries.

SQTP is a service mark of Microchip Technology Incorporated in the U.S.A.

All other trademarks mentioned herein are property of their respective companies.

© 1998-2011, Microchip Technology Incorporated, Printed in the U.S.A., All Rights Reserved.

 Printed on recycled paper.

ISBN: 978-1-61341-141-4

Microchip received ISO/TS-16949:2009 certification for its worldwide headquarters, design and wafer fabrication facilities in Chandler and Tempe, Arizona; Gresham, Oregon and design centers in California and India. The Company's quality system processes and procedures are for its PIC[®] MCUs and dsPIC[®] DSCs, KEELOQ[®] code hopping devices, Serial EEPROMs, microperipherals, nonvolatile memory and analog products. In addition, Microchip's quality system for the design and manufacture of development systems is ISO 9001:2000 certified.

QUALITY MANAGEMENT SYSTEM
CERTIFIED BY DNV
== ISO/TS 16949:2009 ==



MICROCHIP

Worldwide Sales and Service

AMERICAS

Corporate Office
2355 West Chandler Blvd.
Chandler, AZ 85224-6199
Tel: 480-792-7200
Fax: 480-792-7277
Technical Support:
<http://www.microchip.com/support>
Web Address:
www.microchip.com

Atlanta
Duluth, GA
Tel: 678-957-9614
Fax: 678-957-1455

Boston
Westborough, MA
Tel: 774-760-0087
Fax: 774-760-0088

Chicago
Itasca, IL
Tel: 630-285-0071
Fax: 630-285-0075

Cleveland
Independence, OH
Tel: 216-447-0464
Fax: 216-447-0643

Dallas
Addison, TX
Tel: 972-818-7423
Fax: 972-818-2924

Detroit
Farmington Hills, MI
Tel: 248-538-2250
Fax: 248-538-2260

Indianapolis
Noblesville, IN
Tel: 317-773-8323
Fax: 317-773-5453

Los Angeles
Mission Viejo, CA
Tel: 949-462-9523
Fax: 949-462-9608

Santa Clara
Santa Clara, CA
Tel: 408-961-6444
Fax: 408-961-6445

Toronto
Mississauga, Ontario,
Canada
Tel: 905-673-0699
Fax: 905-673-6509

ASIA/PACIFIC

Asia Pacific Office
Suites 3707-14, 37th Floor
Tower 6, The Gateway
Harbour City, Kowloon
Hong Kong
Tel: 852-2401-1200
Fax: 852-2401-3431

Australia - Sydney
Tel: 61-2-9868-6733
Fax: 61-2-9868-6755

China - Beijing
Tel: 86-10-8569-7000
Fax: 86-10-8528-2104

China - Chengdu
Tel: 86-28-8665-5511
Fax: 86-28-8665-7889

China - Chongqing
Tel: 86-23-8980-9588
Fax: 86-23-8980-9500

China - Hangzhou
Tel: 86-571-2819-3180
Fax: 86-571-2819-3189

China - Hong Kong SAR
Tel: 852-2401-1200
Fax: 852-2401-3431

China - Nanjing
Tel: 86-25-8473-2460
Fax: 86-25-8473-2470

China - Qingdao
Tel: 86-532-8502-7355
Fax: 86-532-8502-7205

China - Shanghai
Tel: 86-21-5407-5533
Fax: 86-21-5407-5066

China - Shenyang
Tel: 86-24-2334-2829
Fax: 86-24-2334-2393

China - Shenzhen
Tel: 86-755-8203-2660
Fax: 86-755-8203-1760

China - Wuhan
Tel: 86-27-5980-5300
Fax: 86-27-5980-5118

China - Xian
Tel: 86-29-8833-7252
Fax: 86-29-8833-7256

China - Xiamen
Tel: 86-592-2388138
Fax: 86-592-2388130

China - Zhuhai
Tel: 86-756-3210040
Fax: 86-756-3210049

ASIA/PACIFIC

India - Bangalore
Tel: 91-80-3090-4444
Fax: 91-80-3090-4123

India - New Delhi
Tel: 91-11-4160-8631
Fax: 91-11-4160-8632

India - Pune
Tel: 91-20-2566-1512
Fax: 91-20-2566-1513

Japan - Yokohama
Tel: 81-45-471- 6166
Fax: 81-45-471-6122

Korea - Daegu
Tel: 82-53-744-4301
Fax: 82-53-744-4302

Korea - Seoul
Tel: 82-2-554-7200
Fax: 82-2-558-5932 or
82-2-558-5934

Malaysia - Kuala Lumpur
Tel: 60-3-6201-9857
Fax: 60-3-6201-9859

Malaysia - Penang
Tel: 60-4-227-8870
Fax: 60-4-227-4068

Philippines - Manila
Tel: 63-2-634-9065
Fax: 63-2-634-9069

Singapore
Tel: 65-6334-8870
Fax: 65-6334-8850

Taiwan - Hsin Chu
Tel: 886-3-6578-300
Fax: 886-3-6578-370

Taiwan - Kaohsiung
Tel: 886-7-213-7830
Fax: 886-7-330-9305

Taiwan - Taipei
Tel: 886-2-2500-6610
Fax: 886-2-2508-0102

Thailand - Bangkok
Tel: 66-2-694-1351
Fax: 66-2-694-1350

EUROPE

Austria - Wels
Tel: 43-7242-2244-39
Fax: 43-7242-2244-393

Denmark - Copenhagen
Tel: 45-4450-2828
Fax: 45-4485-2829

France - Paris
Tel: 33-1-69-53-63-20
Fax: 33-1-69-30-90-79

Germany - Munich
Tel: 49-89-627-144-0
Fax: 49-89-627-144-44

Italy - Milan
Tel: 39-0331-742611
Fax: 39-0331-466781

Netherlands - Drunen
Tel: 31-416-690399
Fax: 31-416-690340

Spain - Madrid
Tel: 34-91-708-08-90
Fax: 34-91-708-08-91

UK - Wokingham
Tel: 44-118-921-5869
Fax: 44-118-921-5820

05/02/11