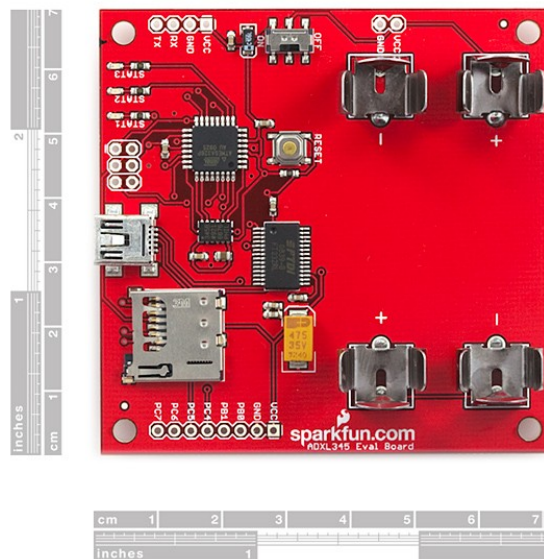
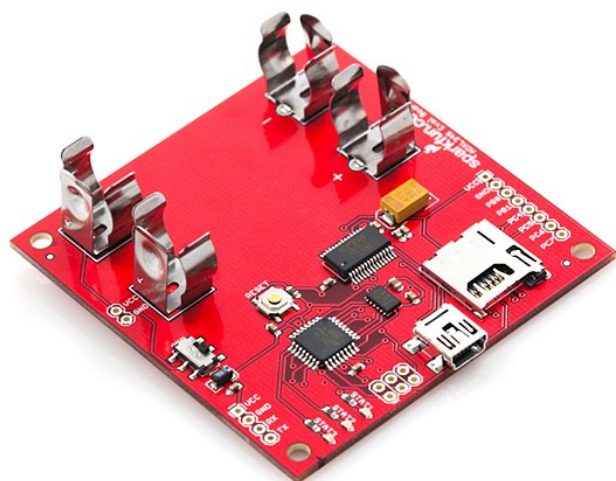


SparkFun

Evaluation Board - ADXL345

sku: SEN-09814



Description: This is an evaluation board for the ADXL345 three-axis accelerometer. The ADXL345 is an awesome little accelerometer, capable of measuring acceleration of up to $\pm 16g$ at up to 13-bit resolution. The evaluation board includes everything you'll need to adjust the ADXL345's settings, and monitor and log its outputs.

The on-board ATmega328 takes care of all the I2C/SPI communication with the ADXL345, and it will also log the x-, y-, and z-axis acceleration values onto a uSD card.

The board includes a USB interface, which allows you to read/write any of the ADXL345's registers using a terminal emulator. The default baud rate is 57600bps (8-N-1). The UART pins are also broken out allowing a direct TTL interface with the processor.

Power can be supplied by 2xAA batteries, or with a 3.0-3.3VDC power supply at the VCC/GND pins.

The ADXL345 evaluation board does not include batteries, uSD card or a USB cable, check the related items section below for these products.

Note: Previous boards have been shipped without the Arduino Bootloader preinstalled on the ATmega328. This issue has been fixed; in all orders from now on the microprocessor will have the bootloader loaded.

Features:

- ADXL345 triple-axis accelerometer installed
- microSD card socket for FAT32/16 data logging
- ATmega328 with Arduino bootloader
- USB connector for serial communication
- 2xAA battery sockets to power board
- Pre-installed firmware logs ADXL345 outputs and allows you to read/write registers via USB

Dimensions: 2.75x2.70"

Documents:

- [Source Code](#)
- [User Guide](#)
- [Schematic](#)
- [Eagle Files](#)
- [FTDI Drivers](#)