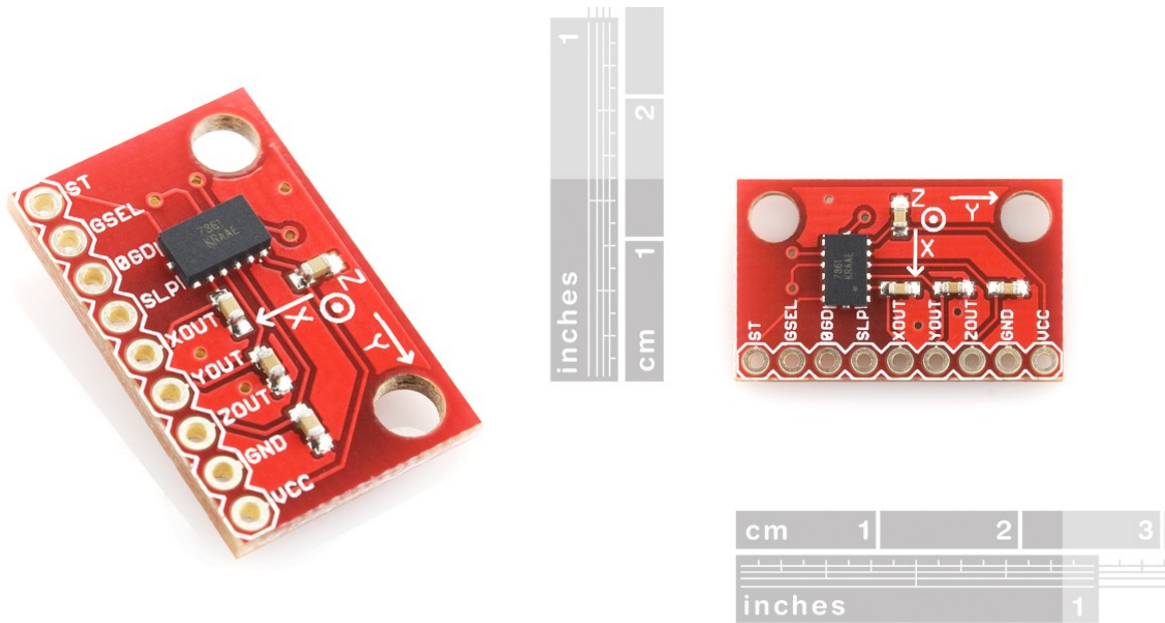


SparkFun

Triple Axis Accelerometer Breakout - MMA7361 (SKU: SEN-09652)



Description: This is a breakout board for Freescale's MMA7361L three-axis analog accelerometer. The sensor requires a very low amount of power and has a g-select input which switches the accelerometer between $\pm 1.5g$ and $\pm 6g$ measurement ranges. Other features include a sleep mode, signal conditioning, a 1-pole low pass filter, temperature compensation, self test, and 0g-detect which detects linear freefall. Zero-g offset and sensitivity are factory set and require no external devices.

This breadboard friendly board breaks out every pin of the MMA7361L to a 9-pin, 0.1" pitch header. The sensor works on power between 2.2 and 3.6VDC (3.3V optimal), and typically consumes just 400 μ A of current. All three axes have their own analog output.

Not sure which accelerometer is right for you? Our [Accelerometer and Gyro Buying Guide](#) might help!

Features:

- Two selectable measuring ranges ($\pm 1.5g$, $\pm 6g$)
- Breadboard friendly - 0.1" pitch header
- Low current consumption: 400 μ A
- Sleep mode: 3 μ A
- Low voltage operation: 2.2 V - 3.6 V
- High sensitivity (800 mV/g at 1.5g)
- Fast turn on time (0.5 ms enable response time)
- Self test for freefall detect diagnosis
- 0g-Detect for freefall protection
- Signal conditioning with low pass filter
- Robust design, high shocks survivability

Dimensions: 0.90 x 0.50"

Documents:

- [Schematic](#)
- [MMA7361L Datasheet](#)