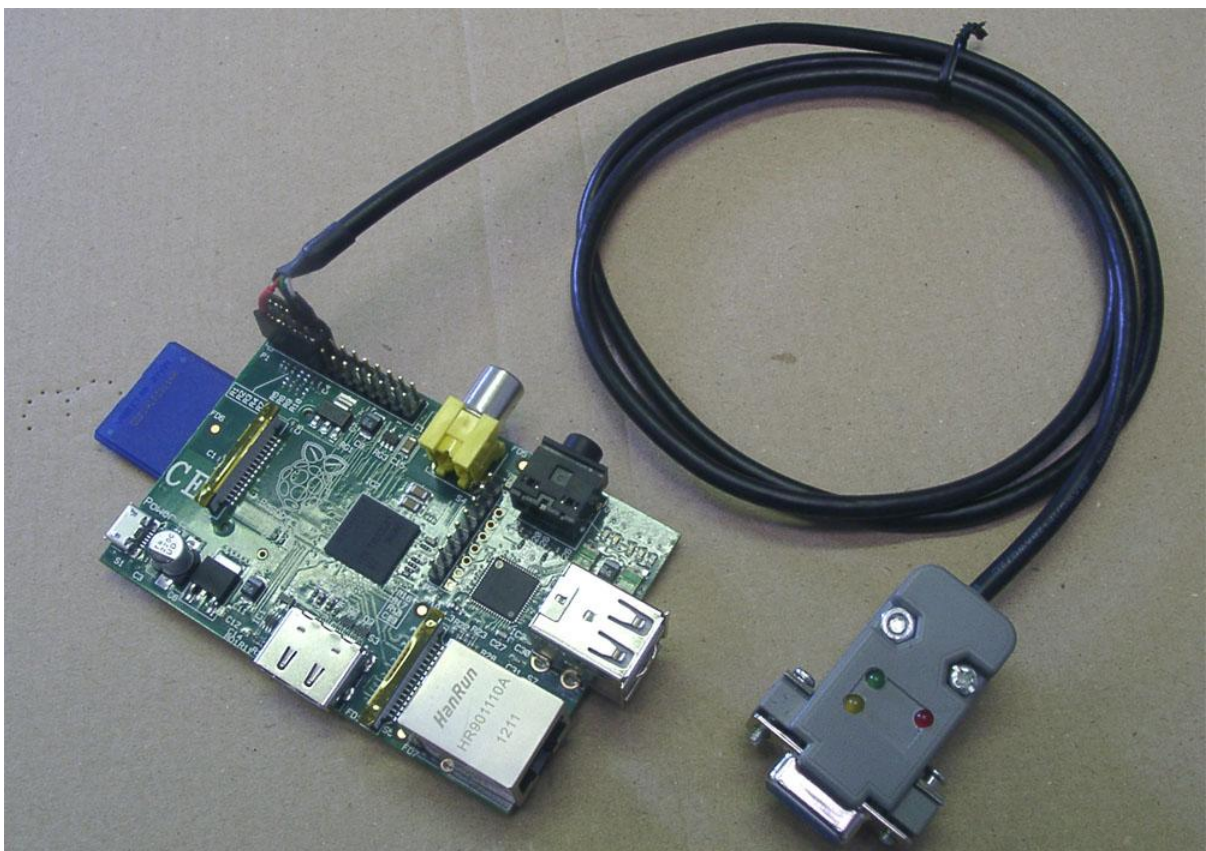
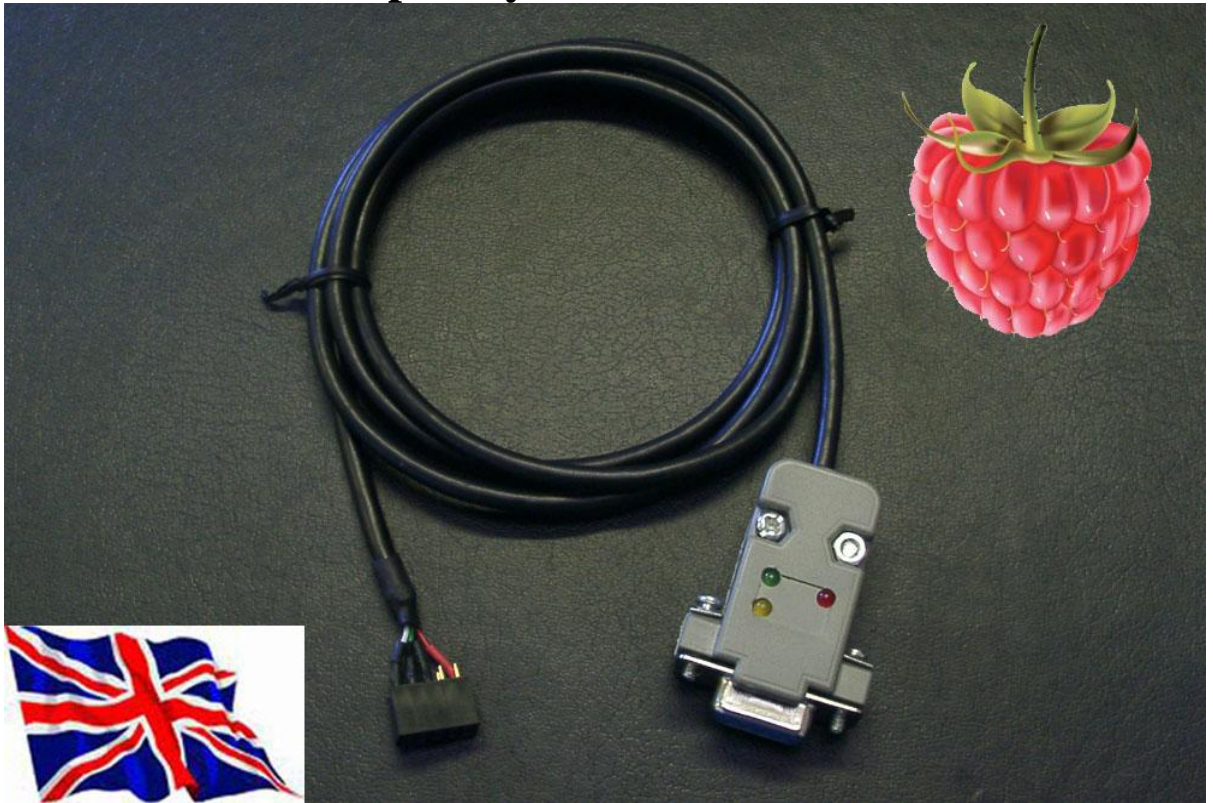
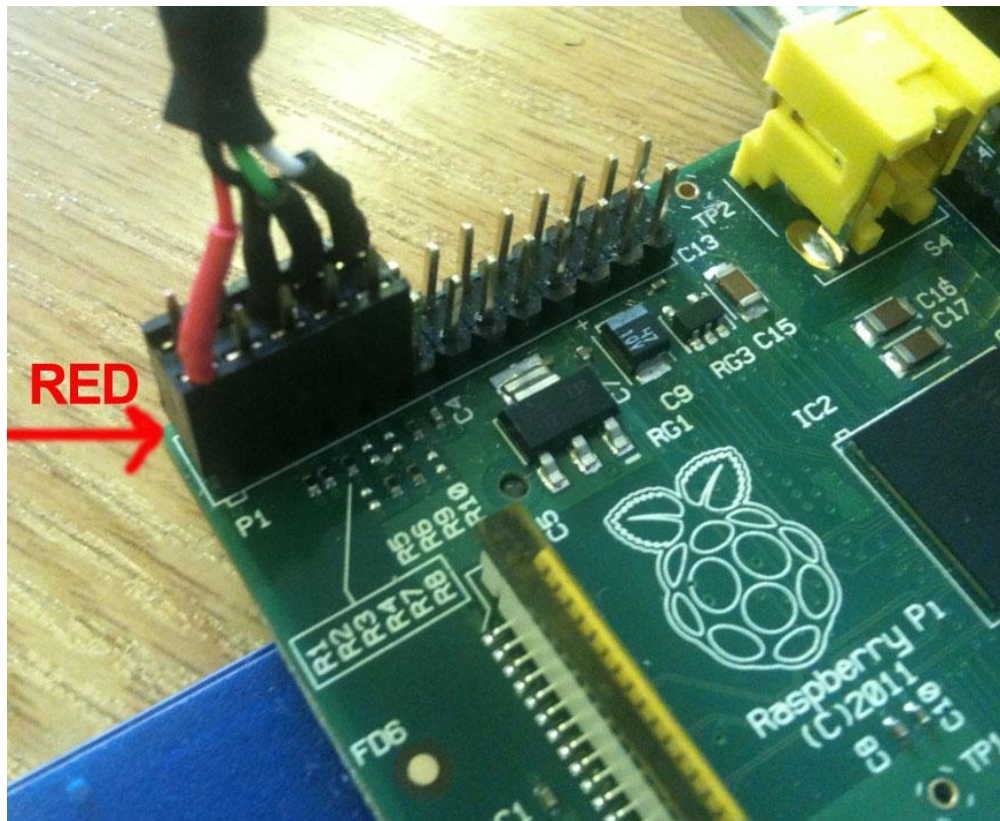


Raspberry Pi RS232 Console cable

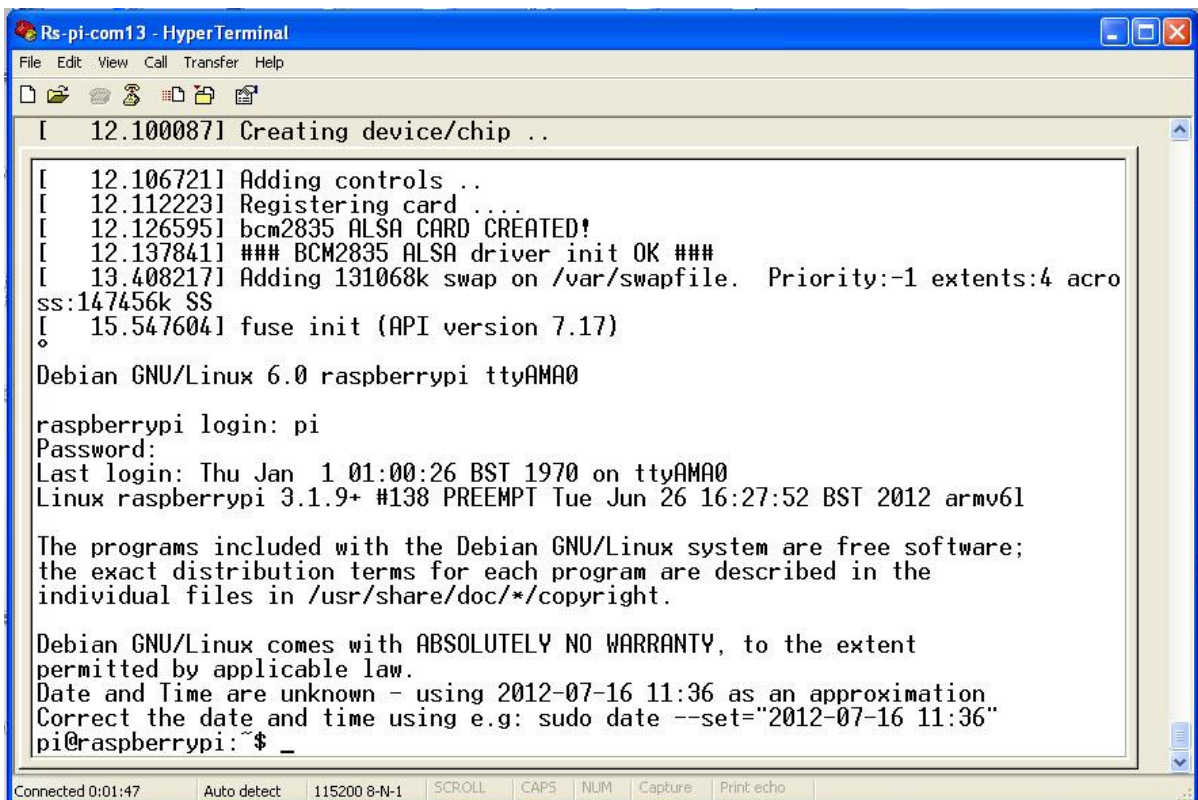




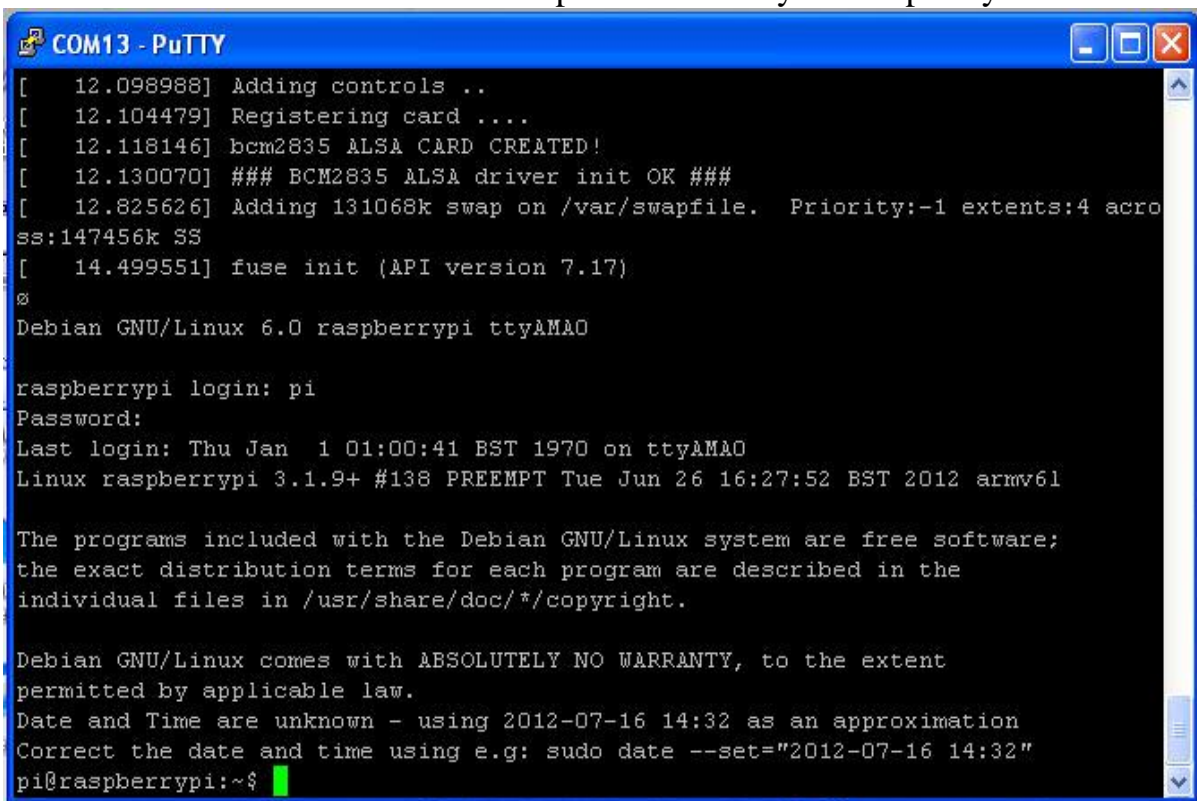
You can use HyperTerminal as screen in computer to access your Raspberry Pi

The necessary settings are:

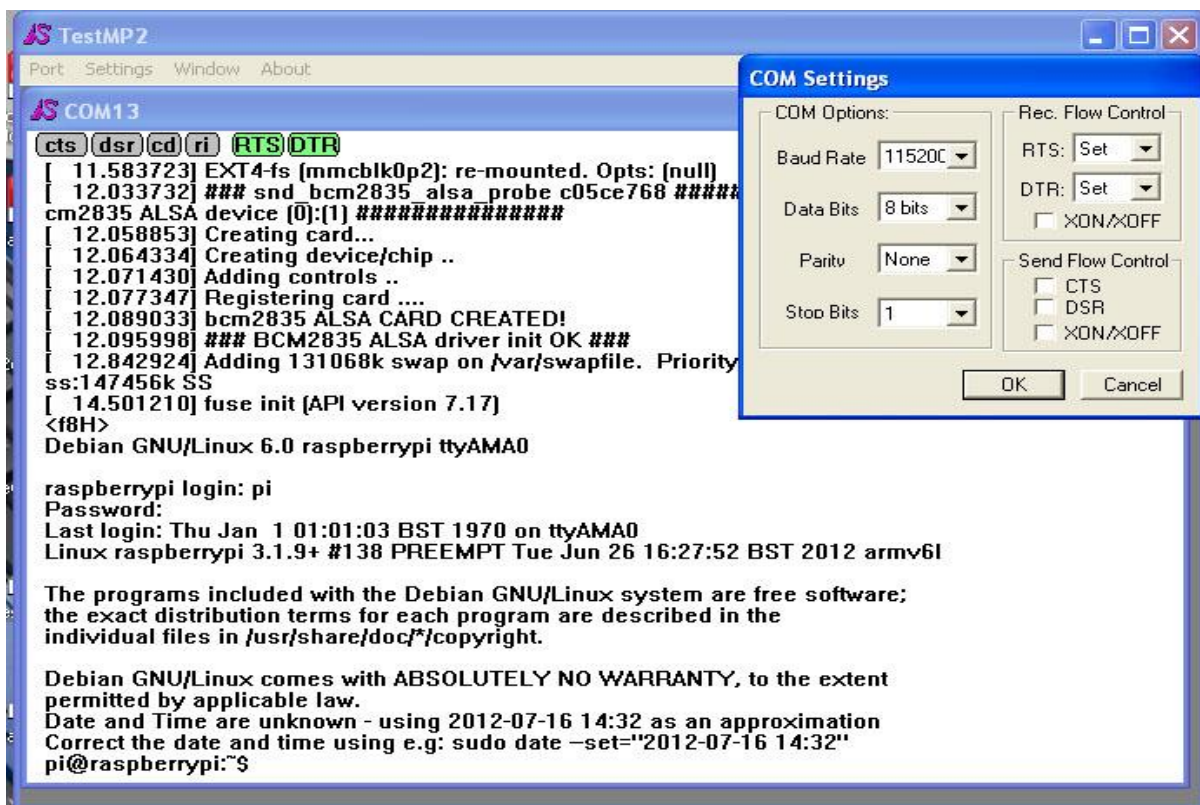
- **Speed: 115200 baud Data bits: 8 Stop bits: 1 Parity: None**
Flow control: None



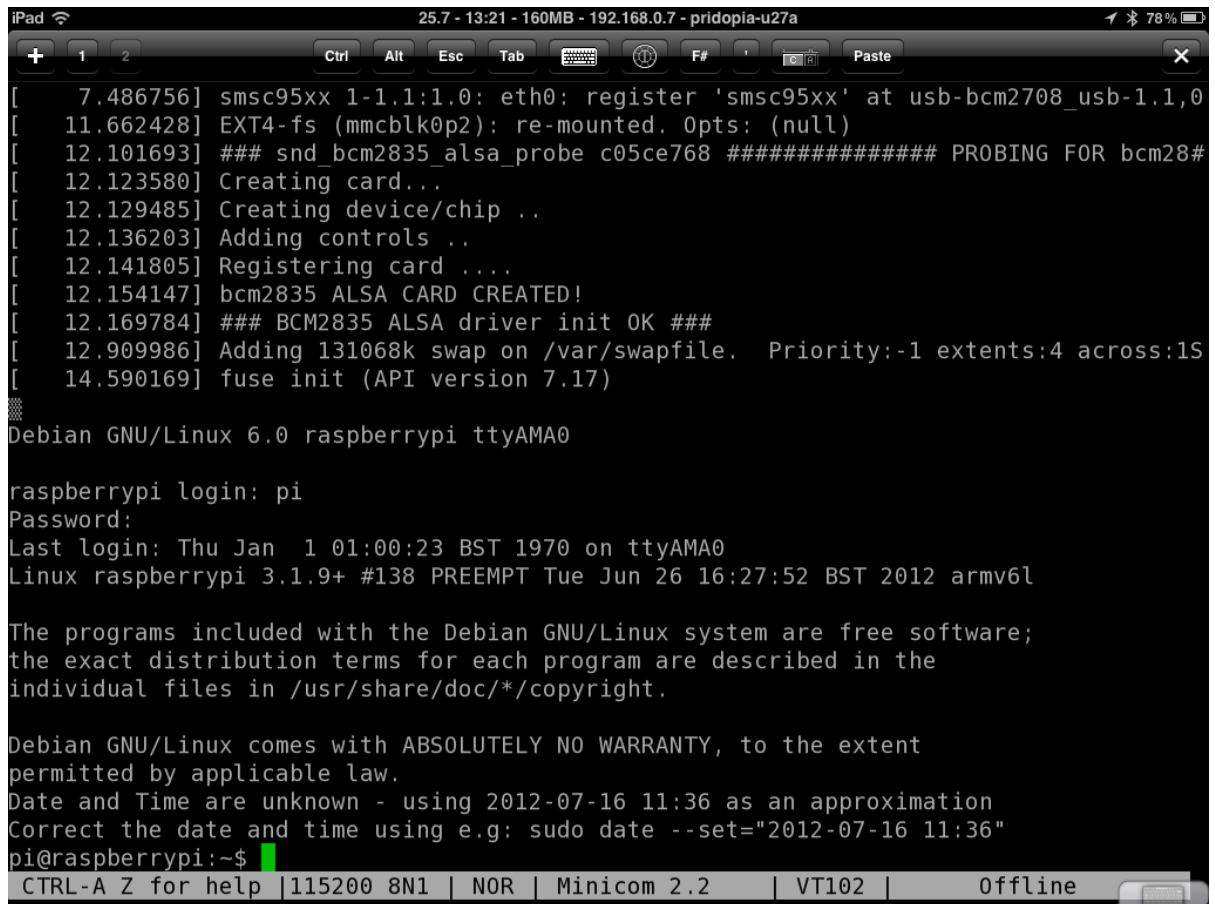
and can use PuTTY as screen in computer to access your Raspberry Pi



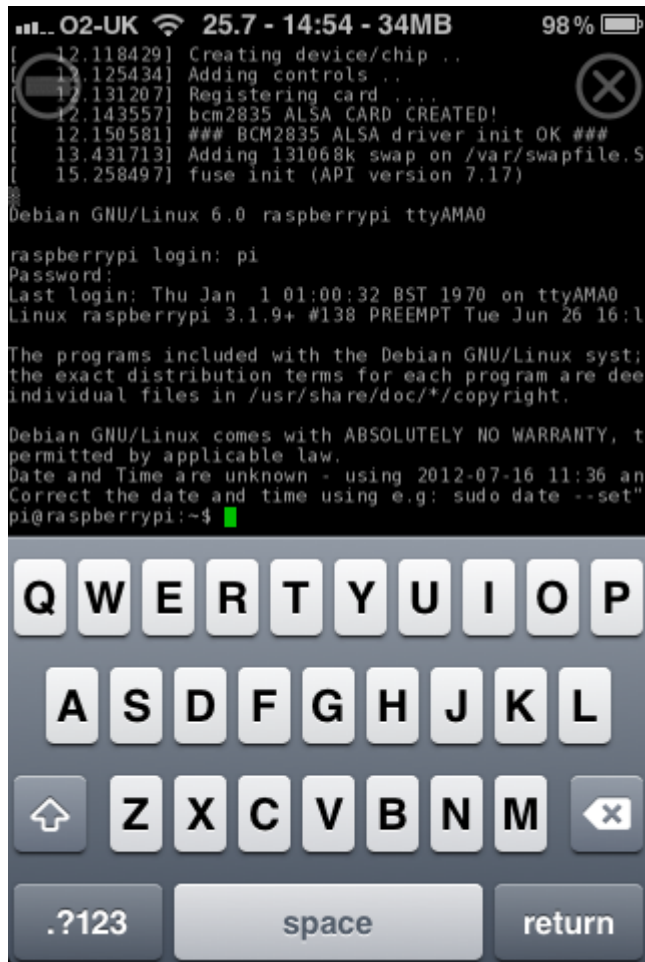
You can use the serial port test program "TestMP2" as screen (program can download from our web site) access your Rs-Pi



also you can use iPhone/iPad (need together with our iPhone/iPad console kit)as screen to access your Raspberry Pi



```
iPad 25.7 - 13:21 - 160MB - 192.168.0.7 - pridopia-u27a 78%
+ 1 2 Ctrl Alt Esc Tab F# Paste X
[ 7.486756] smsc95xx 1-1.1:1.0: eth0: register 'smc95xx' at usb-bcm2708_usb-1.1,0
[ 11.662428] EXT4-fs (mmcblk0p2): re-mounted. Opts: (null)
[ 12.101693] ### snd_bcm2835_alsa_probe c05ce768 ##### PROBING FOR bcm28#
[ 12.123580] Creating card...
[ 12.129485] Creating device/chip ..
[ 12.136203] Adding controls ..
[ 12.141805] Registering card ....
[ 12.154147] bcm2835 ALSA CARD CREATED!
[ 12.169784] ### BCM2835 ALSA driver init OK ###
[ 12.909986] Adding 131068k swap on /var/swapfile. Priority:-1 extents:4 across:15
[ 14.590169] fuse init (API version 7.17)
Debian GNU/Linux 6.0 raspberrypi ttyAMA0
raspberrypi login: pi
Password:
Last login: Thu Jan 1 01:00:23 BST 1970 on ttyAMA0
Linux raspberrypi 3.1.9+ #138 PREEMPT Tue Jun 26 16:27:52 BST 2012 armv6l
The programs included with the Debian GNU/Linux system are free software;
the exact distribution terms for each program are described in the
individual files in /usr/share/doc/*/copyright.
Debian GNU/Linux comes with ABSOLUTELY NO WARRANTY, to the extent
permitted by applicable law.
Date and Time are unknown - using 2012-07-16 11:36 as an approximation
Correct the date and time using e.g: sudo date --set="2012-07-16 11:36"
pi@raspberrypi:~$
CTRL-A Z for help | 115200 8N1 | NOR | Minicom 2.2 | VT102 | Offline
```

Raspberry Pi RS232 console cable (90cm length cable)

You can connect your Rs Pi through your computer serial port or iPhone/ iPad serial port.



This cable with 3 LED for indicate the states of the cable DC 3.3V (Red) , Tx (Green) , Rx (Yellow)

The Pi RS232 Interface board uses level shift circuitry on the UART Transmit (Tx) and Receive (Rx) signal lines to protect the Raspberry Pi from damage caused by

incompatible voltage levels. It uses a RS232 driver and a charge pump circuit to generate full RS232 signal levels from those shifted signals.

We use MAX3232 3.3V/5V for the RS232 transceiver.

With this cable your Raspberry Pi can talk directly to your computers RS232 port or any other standard RS232 piece of equipment (iPad, iPhone etc..).

If you have an operating system loaded on your Raspberry Pi that uses the UART port as the console you can program and talk to the Raspberry Pi with a terminal program.

If you have the Debian image on your Pi's SD card (downloaded from the Raspberry Pi download site) then it will already use the UART as a console without any additional programming.

The Pi RS232 console cable plugs (2x5 header) directly onto the Pi's 26 way header from pin1 and takes power from the Pi's 3.3V supply,

Package Content

1x Pi console cable (with 90cm length cable)

1x manual