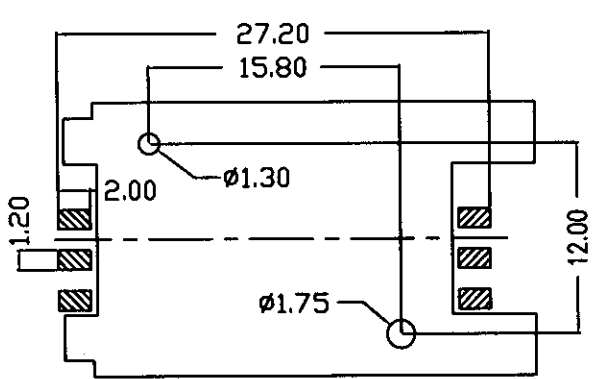
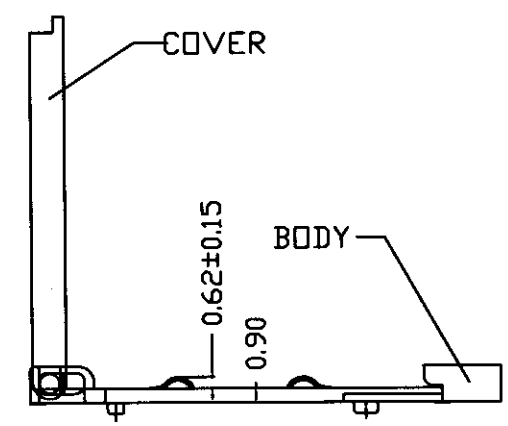
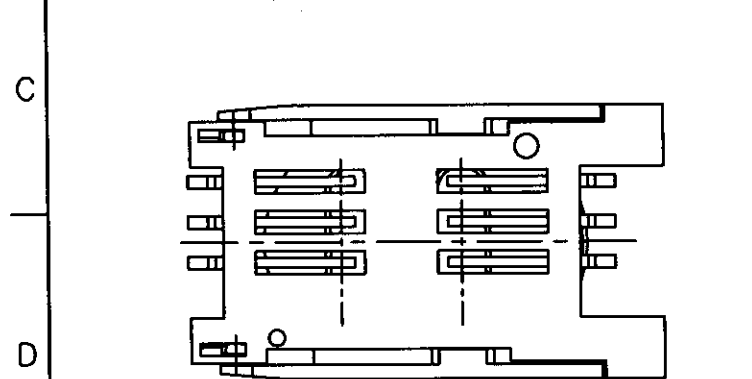
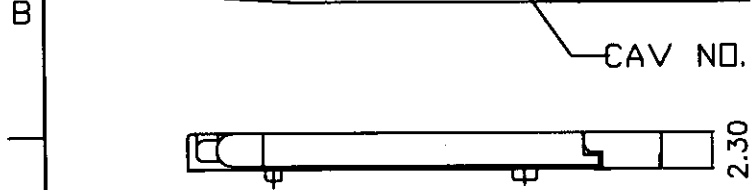
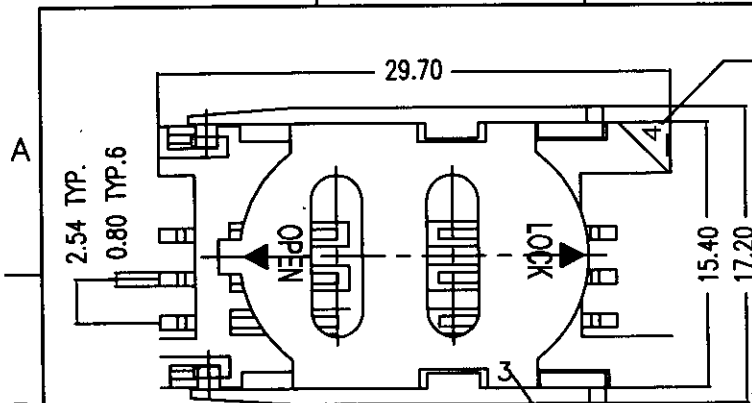


SH	REV
1	1
REV	DESCRIPTION
▲	DATE



RECOMMEND P.C.B. LAYOUT
TOP VIEW

ORDER INFORMATION:
KSI-06B1D-AP

- B: Plating
 (1) Gold flash (2) 15u" Gold (4) 30u" Gold
 D: Packaging:
 (1) Tube (2) Tape & Reel

- *Material:
 1.Body: LCP UL 94V-0 Rated, Color:Black;
 2.Cover: LCP UL 94V-0 Rated, Color:Black;
 3.Contact: Phosphor Bronze;
 4.Contact Plating: Gold Plating Over Nickel
 on Contact Area, Tin/Lead Plating
 on Terminal.

- *Specification:
 1.Current Rating: 0.5 AMP. Max.;
 2.Dielectric Withstanding Voltage:
 500V AC R.M.S For One Minute;
 3.Insulation Resistance: 1000 M Ohms Min.
 AT 500V AC;
 4.Contact Resistance: 30 M Ohms Max.;
 5.Operating Temperature: -25°C to +85°C;
 6.Processing Temp: 230°C for 30-60 Seconds Max.;
 7.Durability: 5000 Cycles.

MATERIAL					
FINISH					
SELECT V	1	2	3	4	EXTRA
0	0.03	0.05	0.10	0.20	0.05
5-25	0.05	0.08	0.20	0.36	0.05
25-80	0.08	0.12	0.30	0.40	0.05
80-250	0.12	0.20	0.40	0.50	0.05
250-	0.20	0.30	0.50	0.60	0.05

KINGSTATE KINGSTATE ELECTRONICS CORP.
<http://www.kingstate.com.tw>

DESCRIPTION 6 PIN SIM CARD CONNECTOR WITH POST

PART NO. KSI-06-L Series DRAWN NO. YK4-1177

THIRD ANGLE PROJECTION

SCALE * U_{UNIT}: mm/inch SHEET 1/1