

Raspberry Pi Serial console cable

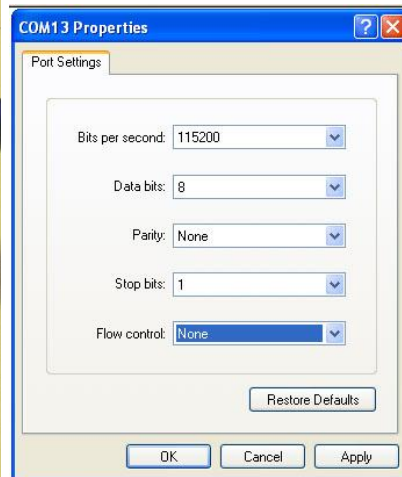
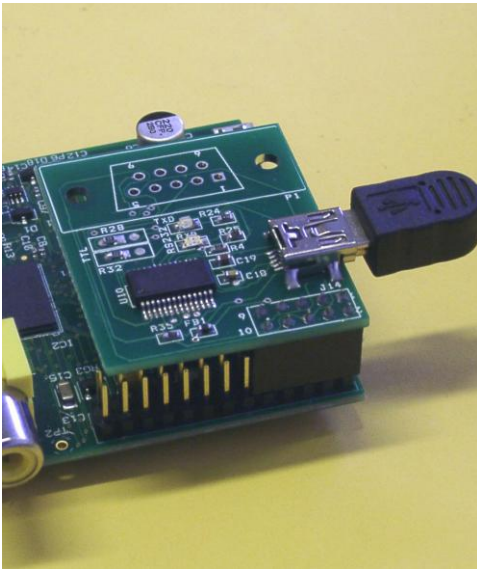
1. Turn off the DC power from Rs-pi
2. plug-in to P1
3. Connect the mini USB to your PC USB port
4. install FT232RL driver
5. Run the Putty program from PC, and do the basic setting as follow

The necessary settings are:

- **Speed: 115200 baud**
- **Data bits: 8 Stop bits: 1**
- **Parity: None**
- **Flow control: None**

6. Turn on the power of your Rs Pi

7 You will see the Pi boot procedure from the screen.



For PC or Mac if you need driver you can download from our web site in number 19 FT232RL chipset

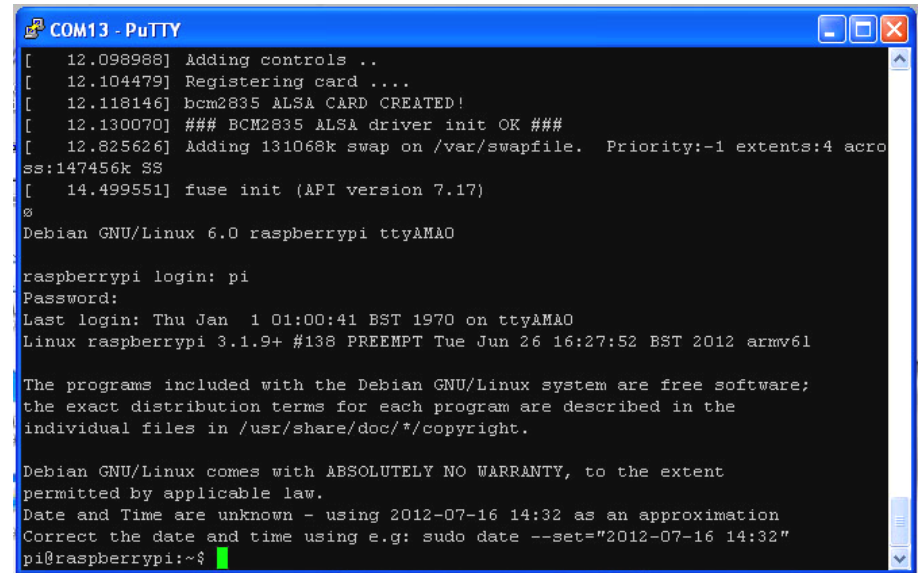
<http://www.pridopia.co.uk/support.html>

also the all the information for FT232RL

<http://www.ftdichip.com/Products/ICs/FT232R.htm>

Driver for PC or Mac from FTDI web site

<http://www.ftdichip.com/FTDrivers.htm>



In PuTTY