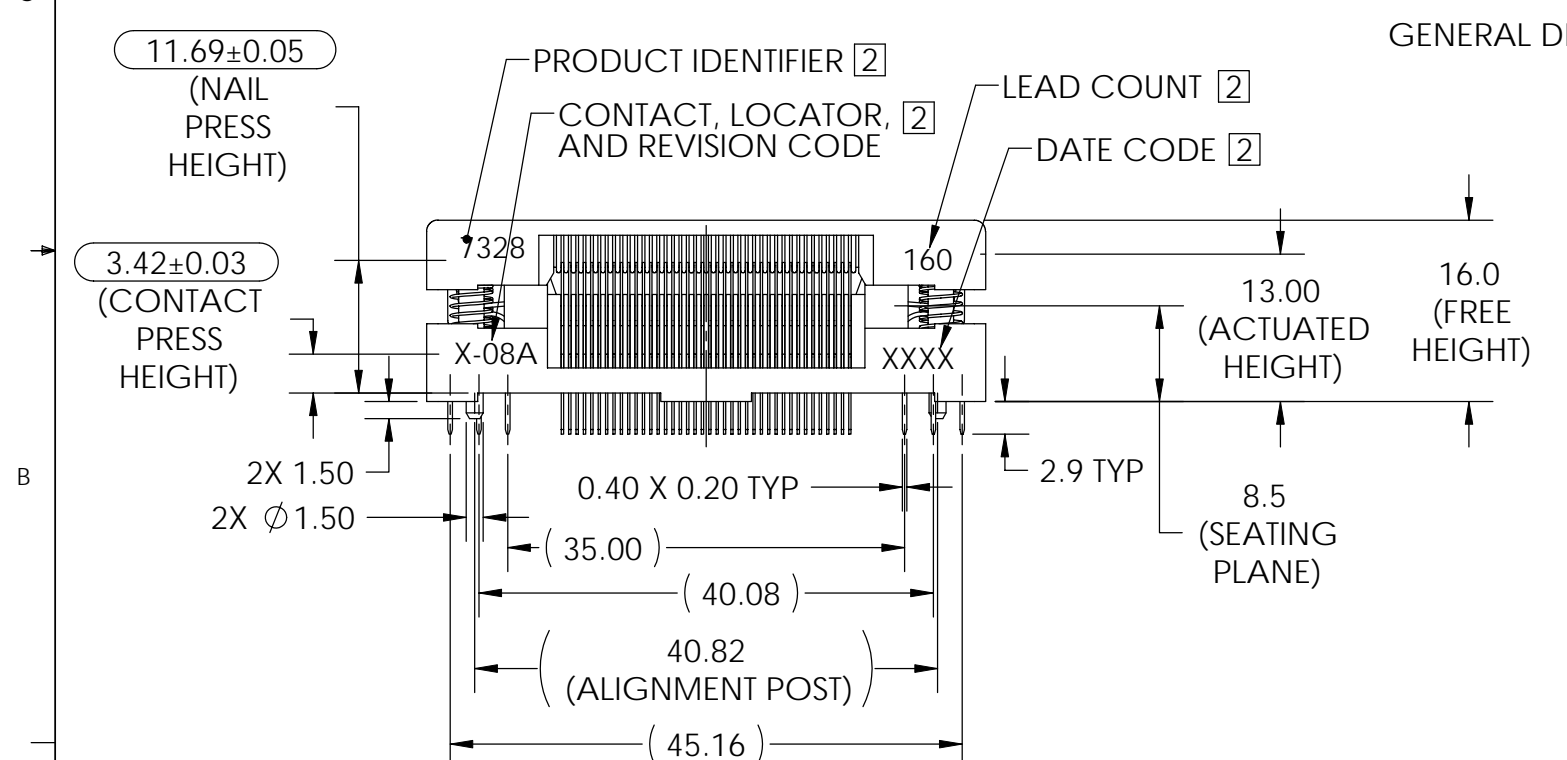
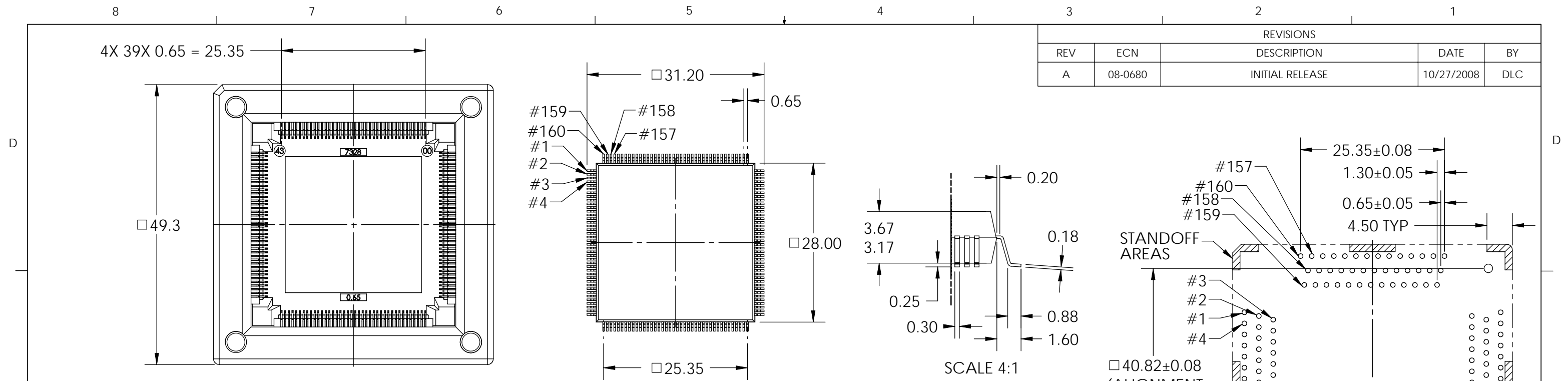


REVISIONS				
REV	ECN	DESCRIPTION	DATE	BY
A	08-0680	INITIAL RELEASE	10/27/2008	DLC



7328-160 - X - 08 A

SOCKET ASSEMBLY REVISION

CONTACT MATERIAL & PLATING
 0 = BeCu w/ Au (Overall) (SPECIAL ORDER)
 6 = BeCu w/ Au-Au FLASH

ITEM NO.	QTY.	PART NUMBER	DESCRIPTION
5	160	002-084-XX	CONTACT, OUTER
4	4	2800632	SPRING, COMP., .150IN. O.D., .200IN. LEN.
3	4	006-027-00	CORNER NAIL
2	1	001-813-34	QFP SOCKET LID (28mm, 168LD, 0.65mm c/c)
1	1	001-843-00	SOCKET BASE

LEGEND		MATERIAL		FINISH	
○	CRITICAL	INTERPRET DRAWING IN ACCORDANCE WITH ASME Y14.5M-1994		antares Advanced Test Technologies	
2	TOTAL NO. OF ○ USED	TOLERANCES	REFERENCE	DRAWN	DATE
PROJECTION		X.X ± 0.2	DLC		10/27/2008
SIZE		X.XX ± 0.08	PROJECT / SERIES	CHECKED	DATE
B		X.XXX ± 0.025	7328	ENGINEER	DATE
CONFIDENTIAL/PROPRIETARY		ANGLE ± 1°	DLC		10/27/2008
THIS DOCUMENT CONTAINS PROPRIETARY INFORMATION OF ANTARES-ATT. NOT TO BE USED, COPIED OR DISCLOSED WITHOUT PERMISSION. ALL RIGHTS RESERVED.		QUALITY		DATE	
		MFG. ENGR.		DATE	
		DO NOT SCALE		SHEET 1 OF 1	

3. THIS PRODUCT IS ROHS COMPLIANT.
 [2] MARKING: 2.0 HIGH, COLOR - WHITE, LOCATE AS SHOWN.
 1. MATERIAL AND FINISH:
 SOCKET LID AND BASE: POLYETHERIMIDE.
 CONTACTS: SEE CHART
 SPRINGS: STAINLESS STEEL, PASSIVATED.
 NAILS: STAINLESS STEEL, PASSIVATED.
 NOTES, UNLESS OTHERWISE SPECIFIED:

