

1. Purpose

When upgrading WISMO2x8 to L20, some units may fail to register to networks.

This document provides the guidelines to recover the faulty modules.

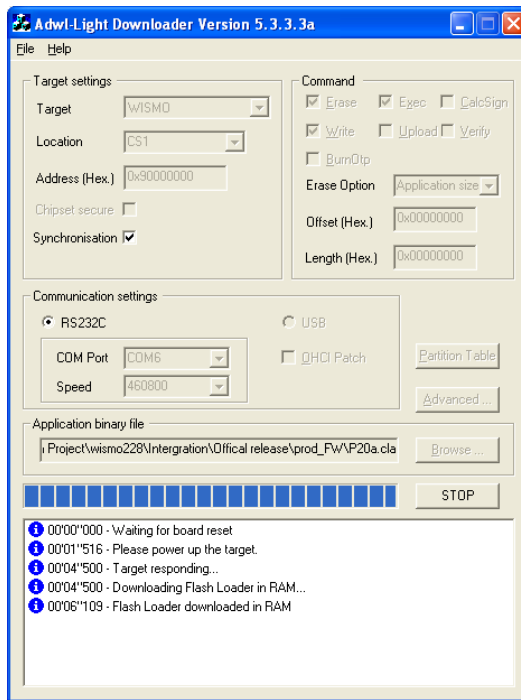
2. Issue description / Symptoms

The module is not able to register to networks even if PIN code has been successfully entered and signal quality is OK.

- WISMO is not able to register to network
 - AT+CREG? Always return +CREG: 0,0
- SIM access AT Command or AT Command requiring initialized SIM return ERROR
 - AT+CSCA? -> +CMS ERROR: 500
 - AT+CPBR=? -> +CME ERROR: 100
 - AT+CPOL? -> +CME ERROR: 100
 - AT+CMGL -> +CMS ERROR: 500
 - AT+CMGR=1 -> +CMS ERROR: 500

3. Solution

1. Download P20a by ADWL.
2. After P20a download, power cycle the WISMO
3. Download the L20 firmware.
4. Power cycle the WISMO after able to input AT-Command



4. Comments

- The symptoms will appear immediately after the upgrade to L20.
- NOT all the units are exposing this issue after the L20 upgrade
- Units that DO register to the network after the L20 upgrade will NOT show this problem at a later stage and are OK for operation.
- The P20a.WISMO 300610.cla applies to both WISMO218 and WISMO228.
- Firmware upgrade implemented in customer's application through their μ C may also face this issue when upgrading WISMO to L20.

It is therefore highly recommended that customers implement WISMO upgrade in their μ C starting L20 onwards, and not on former releases.